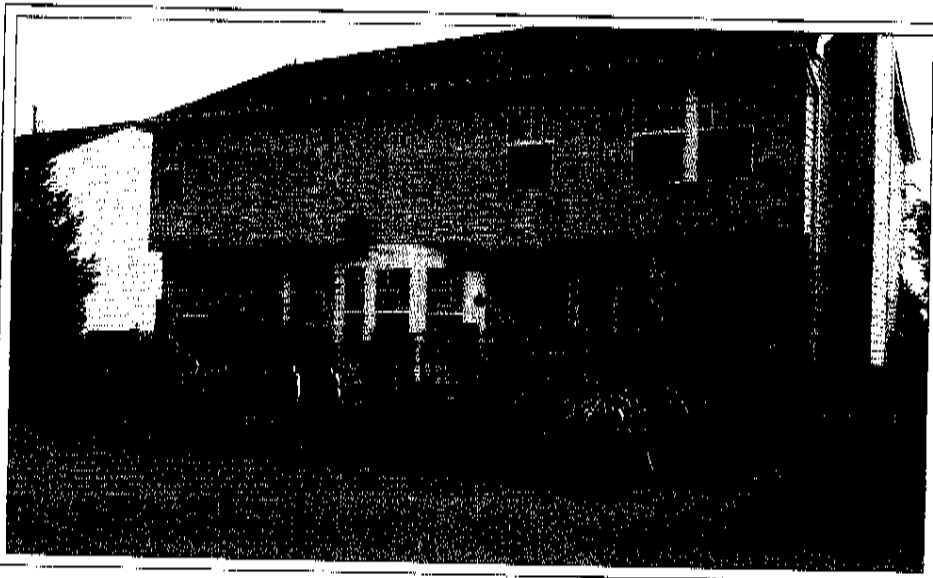


**10838 MEADOWLEA ROAD
OWINGS MILLS, MD
21117**



A 1

WHOLE HOUSE FEATURES

- Central Vacuum
- Security System with Integrated Lighting and HVAC Control
- Recessed Lights
- Expanded Closets
- Intercom
- Data Ports / Telephone Jacks / CATV Jacks
- Video Security Cameras
- Whole House Stereo Speaker System
- Extensive Landscaping
- Landscape and Deck Lighting

Main Level

Foyer

- Ceiling rises to 2nd Floor
- Hardwood Flooring
- Expanded Coat Closet
- Brass & Glass Ceiling Chandelier
- Central Vacuum Inlet
- Alarm Keypad
- Plant Shelf

Living Room 17 x 12

- Wall-to-Wall Carpeting
- Custom Window Treatments
- Recessed Lights
- In-Wall Speakers
- Bay Window

Dining Room 14 x 12

- Wall-to-Wall Carpeting
- Custom Window Treatments
- Recessed Lights
- Chair Rail Molding

Family Room 18 x 13

- Wall-to-Wall Carpeting
- Ceiling Fan
- Recessed Lights
- French Swing Door to Deck
- Wood Burning Fireplace with Marble
- Surround Sound Speakers
- Built-In Media Center Houses Main Stereo Amplifier

Family Room - Continued

- CATV / Data & Telephone Jack

Kitchen 18 x 13

- Self Cleaning Bottom Oven
- Top Oven
- Gas Stove
- Under Cabinet Lights
- Pantry
- Breakfast Area w / Bay Window
- Custom Window Treatments
- Recessed Light over Sink
- Double Stainless Steel Sink
- Garbage Disposal
- Data Ports / Telephone Jacks
- Refrigerator
- Dishwasher
- CATV
- Under Cabinet Swivel Television
- Hide Away Trash

Laundry Room

- Heavy Duty Washer
- Heavy Duty Gas Dryer
- Overhead Cabinets
- Fire Sensor

Second Level

Master Bedroom 14 x 16

- Wall-to-Wall Carpeting
- Cathedral Ceiling
- Separate Expanded Walk-In Closets
- In Wall Speakers
- Ceiling Fan
- Recessed Lights
- Alarm Keypad
- Intercom
- CATV /Telephone Jack
- Remote Stereo Control

Master Bath

- Ceramic Tile Floor
- Cathedral Ceiling
- Soaking Tub
- Large Vanity
- In-Wall Speakers
- Large Shower Stall with Recessed Light and Speaker
- Telephone Jack
- Custom Window Treatments
- Ceiling Heater / Fan / Nite Lite

Bedroom # 2 12 x 11

- Wall-to-Wall Carpeting
- Chair Rail Molding
- Closet
- Recessed Light
- Wall Shelves
- Intercom

Bedroom # 3 10 x 15

- Wall-to-Wall Carpeting
- Recessed Lights
- Wall Shelves

Bedroom # 3 – continued

- CATV
- Telephone Jacks
- Data Ports
- Expanded Closet

Bedroom # 4 14 x 11

- Wall-to-Wall Carpeting
- Wall Shelves
- Expanded Closet
- Recessed Lights
- Telephone Jack
- Built in Dresser / Drawers

Hall Bathroom

- Ceramic tile Floor
- Large Vanity
- Tub with Shower
- Telephone Jack
- Linen Closet in Hallway

A 5

Lower Level

Home Office

- Wall-to-Wall Carpeting
- Closet for File Cabinets
- Multiple Telephone Jacks
- Multiple Data Ports
- CATV
- In Wall Speakers
- Intercom

Home Theater/ Rec Room

- Wall-to-Wall Carpet
- Recessed Lighting
- Intercom Station
- Expanded Media Closet
- Rear Channel in Wall Speakers
- Multiple Telephone / Data / CATV Ports
- Casement Window
- Central Vacuum Inlet

Bedroom / Playroom

- Wall-to-Wall Carpeting
- Recessed Lights
- Intercom
- In Wall Speakers
- CATV Jack
- Telephone Jack
- Closet with Utility Sink
- Large Storage Closet
- Book Shelves
- Casement Window

Utility Room

- Structured Wire Cabinets for CATV and Data Lines
- Security Panel
- Storage Space
- Gas Furnace
- Gas Water Heater
- Smoke Detector

- Large Storage Area Under Stairs
- Hallway with Recessed Light and Vacuum Inlet

Whole House Features

- Central Vacuum
- Security System w/Integrated Lighting and HVAC Control
- Extensive Landscaping
- Landscape Lighting / Front & Rear
- Front Lawn Sprinkler System
- Intercom
- Data Ports / Telephone Jacks / CATV
- Video Security Cameras
- Whole House Speaker System

Outside

Garage

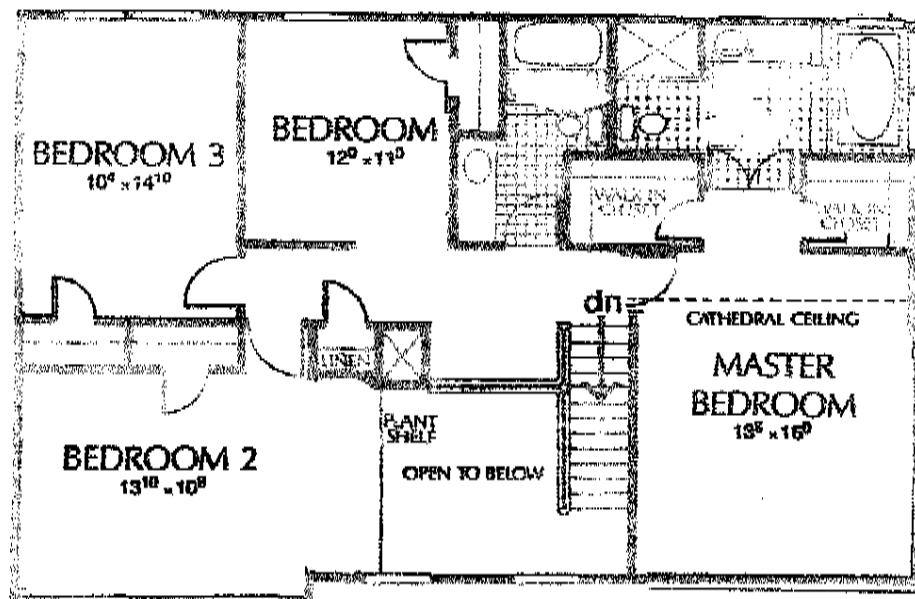
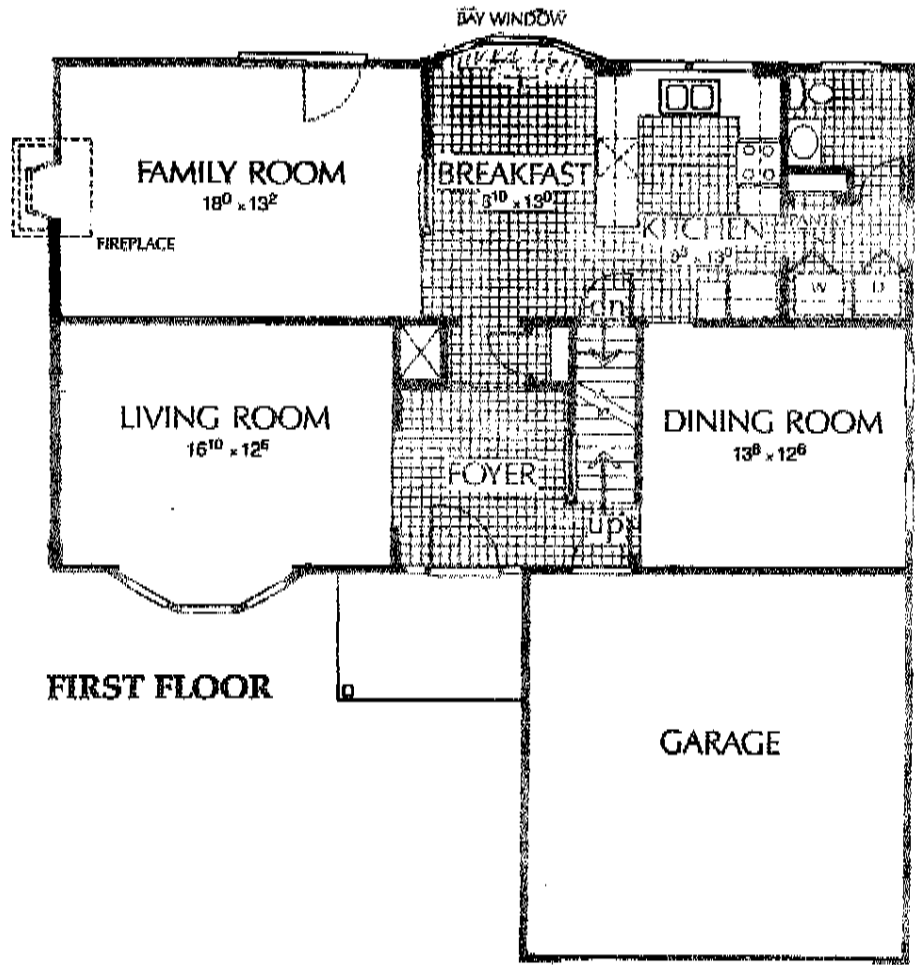
- New Metal Garage Door
- New Garage Door Opener with 2 Remotes and Outside Keypad
- Work Bench
- Pull Down Stairs to Storage Area Above
- Telephone Jack
- Vacuum Inlet
- Video Camera Over Driveway
- Video Camera Over Front Porch

Backyard

- Private Fenced Yard
- Large Bi-Level Deck
- Deck Lighting
- Flood Lights
- Deck Speakers
- Extensive Landscaping

Front Yard

- Front Lawn Sprinkler System
- Extensive Landscaping
- Newly Painted
- Landscape Lighting
- Full Glass Storm Door



A3